

Basstones Sheet

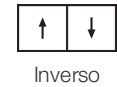
Número De Estilo	0301V	
Número De Estilo De Barra De Soldadura	353VS	
Construcción	Manta Vinílica Comercial Heterogénea Con Fibra De Vidrio	
clase	Type I, Grade 1, Class B	
Clase De Base	Sistema de base fusionado de 4 capas	
Terminación	ExoGuard®	
	U.s.	Metric
Desgaste De La Capa De Uso	20 mil (0.02 in)	0.51 mm
Espesor Total Del Producto	0.087 in	2.2 mm
Instalación	Direct Glue	
Adhesivo Recomendado	S150-95 Resilient Tile Spray, 4200 Resilient Sheet 1 Gallon, 4200 Resilient Sheet 4 Gallon or 4151 Multi-Use Premium 4 Gallon	

Embalaje

Tamaño Real Del Rollo	6.00 ft w x 75.00 ft l	1.83 m w x 22.86 m l
Área Por Rollo	50 sy/roll	41.81 sq m/roll
Peso Por Rollo	267.5 lbs	121.34 kg



Método De Instalación Recomendado



Desempeño + Pruebas

Margen Adicional Residual (Astm F1914)	Passes
Flexibilidad (Astm F137)	Passes
Resistencia Al Calor (Astm F1514)	Passes
Resistencia A La Luz (Astm F1515)	Passes
Resistencia A Productos Químicos (Astm F925)	Passes
Coeficiente De Fricción (Astm D2407, Resistencia Al Deslizamiento)	≥0.5, meets the recommended static coefficient of friction for ADA walking surfaces

Test Reports may be included or listed by the manufacturing/inventory style number as opposed to the noted selling style number.

Garantías

[15 Años Limitado A Uso Comercial](#)
[Commercial 15 Year Underbed Bond Warranty](#)

Diversity, Equity & Inclusion

We believe all humans are equal. Individually and collectively, we need to proactively create and promote opportunities that give everybody an equal footing in life. We nurture an environment where every voice and perspective can be heard, and proactively promote accessibility and inclusivity inside our network and beyond. One proof point is our ability to meet the criteria of the Social Fairness pillar of the Cradle to Cradle Product Standard. At Shaw Industries, we promote supplier participation that is reflective of Shaw's diverse customer base and local community. More than 42% of our spend***** is with small and diverse businesses. We believe having a strong Supplier Diversity Program is strategic for bringing more innovation to our businesses and openingnew markets for growth.







Atributos + Certificaciones

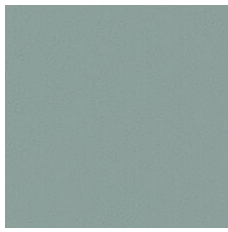
Climate Impact	
Environmental Product Declaration (EPD)	Certificado Tercerizado De Acuerdo Con La Norma ISO 14025, EN 15804, & ISO 21930:2017
Total Recycled Content	0% (Pre-Consumer 0% Post-Consumer 0%)
Global Product Assessment	FloorScore® Certificado
	CE Marking (EN 14041) Certificado Tercerizado
	Country of Origin Imported

Contribución Para Créditos Leed

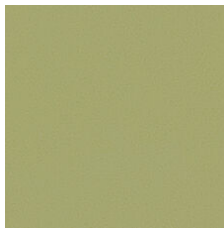
Crédito MR: Divulgación y optimización de productos de construcción Declaraciones ambientales de productos - Opción 1: Declaración ambiental de productos (EPD)	3rd Party Certified in Accordance with ISO 14025, EN 15804, & ISO 21930:2017
Crédito EQ: Materiales de baja emisión Opción 1: Cálculos de categoría de producto	FloorScore Certified
Installation Guidelines	Please visit www.shawcontract.com for the most current warranty information.
Maintenance Guidelines	Specifications are subject to nominal manufacturing variance. Material supply and/or manufacturing processes may necessitate changes without notice.
	This product is an exclusive design and may not be duplicated in any manner. Use of this design in the creation of another product design is also strictly prohibited.
	*****Allowable spend is domestic (US) spend in categories in which we have diverse suppliers from which to choose. Compared to non-allowable spend which includes categories in which we do not have domestic, small or diverse suppliers available to meet our needs.
	Visit shawcontract.com/testing for more information.

Available Colorways

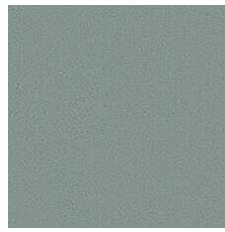
					
Flaxen Vibe 00100 Weldrod 02001	Ecrú Cadence 00110 Weldrod 02001	Desert Sound 00120 Weldrod 02027	Polished Brass 00140 Weldrod 09633	Set Off 00200 Weldrod 02002	Camel Accent 00210 Weldrod 02025



Coastal Tempo 00300
Weldrod 02003



Underscore 00310
Weldrod 02004



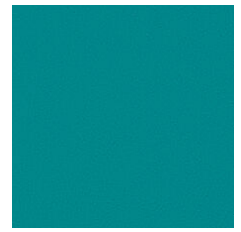
Stanza Sage 00320
Weldrod 02005



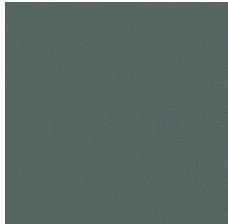
Tonal Vine 00330
Weldrod 02003



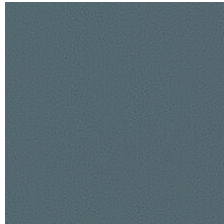
Elevate 00340
Weldrod 02006



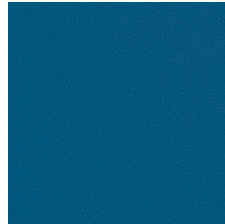
Amplitude 00350
Weldrod 02007



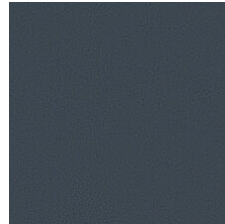
Aqua Tone 00360
Weldrod 02008



Graytone Fade 00410
Weldrod 02009



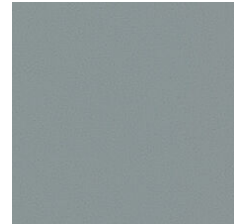
High Fidelity 00420
Weldrod 02010



Mineral Score 00430
Weldrod 02011



Pearly Melody 00500
Weldrod 01203



Pewter Serenade 00530
Weldrod 05244



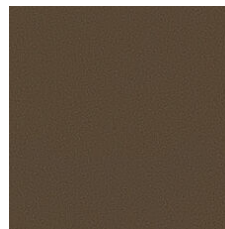
Ashen Interval 00540
Weldrod 02014



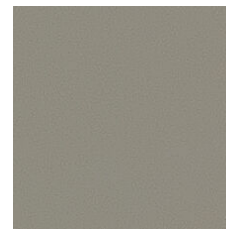
Boost 00600
Weldrod 02017



Adobe Verse 00610
Weldrod 02018



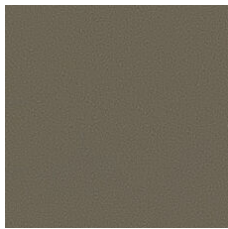
Chorale Clay 00630
Weldrod 01823



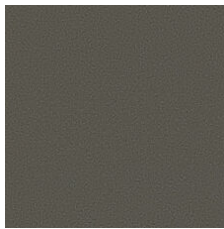
Khaki Cue 00700
Weldrod 02001



Neutral Intro 00710
Weldrod 02020



Gilded Mink 00750
Weldrod 02026



Coffee Echo 00760
Weldrod 05230



Amplify 00800
Weldrod 02022



Emphasize 00900
Weldrod 02024

